

PARTS OF S.E. 1/4, SEC. 13, & N.E. 1/4, SEC. 24, T.5N., R.3W., S.L.B. & M.

HOOPER CITY

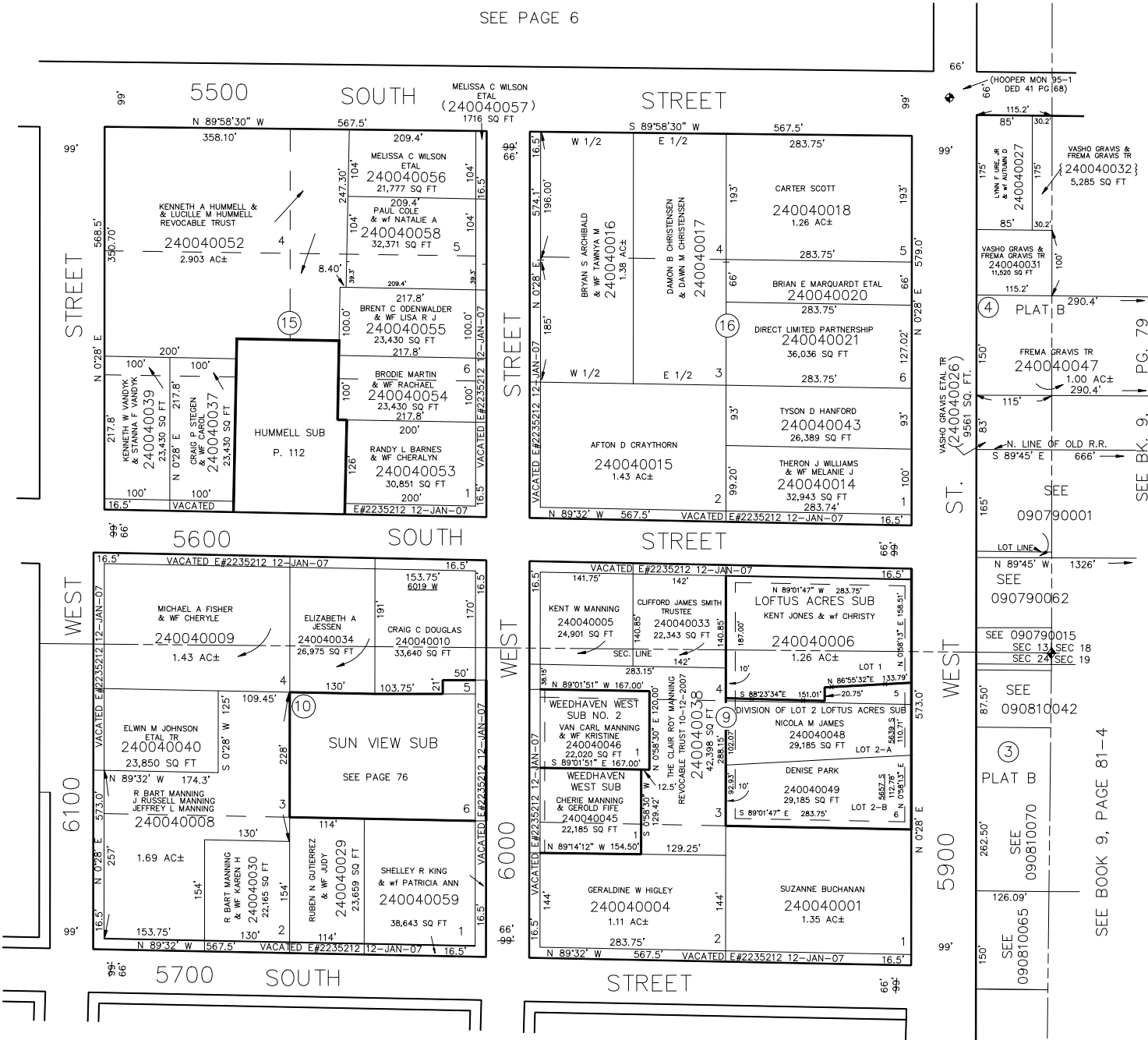
BLOCKS 9, 10, 15 & 16, PLAT "A", & LOTS 3 & 4 PLAT "B"

TAXING UNIT: 376

SCALE 1" = 120'

SEE PAGE 6

SEE PAGE 5



SEE PAGE 2